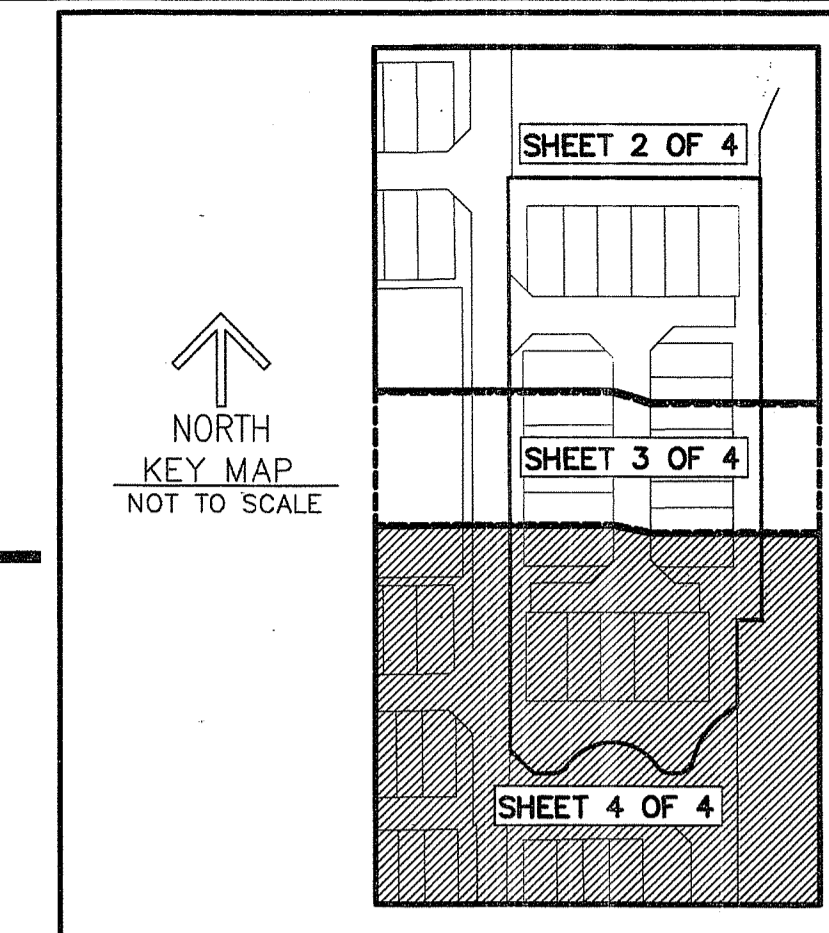


THIS INSTRUMENT PREPARED BY  
DAVID P. LINDLEY  
OF  
**CAULFIELD and WHEELER, INC.**  
SURVEYORS - ENGINEERS - PLANNERS  
7900 GLADES ROAD, SUITE 100  
BOCA RATON, FLORIDA 33434 - (561)392-1991

# VILLAGGIO ISLES PARCEL E REPLAT

VILLAGGIO ISLES PUD, A PLANNED UNIT DEVELOPMENT  
BEING A REPLAT OF PARCEL E AND TRACT L3, VILLAGGIO ISLES PARCEL D REPLAT,  
AS RECORDED PLAT BOOK 119, PAGES 111 THROUGH 114 OF THE PUBLIC RECORDS OF PALM BEACH COUNTY, FLORIDA,  
LYING IN SECTION 16 TOWNSHIP 46 SOUTH, RANGE 42 EAST, PALM BEACH COUNTY, FLORIDA



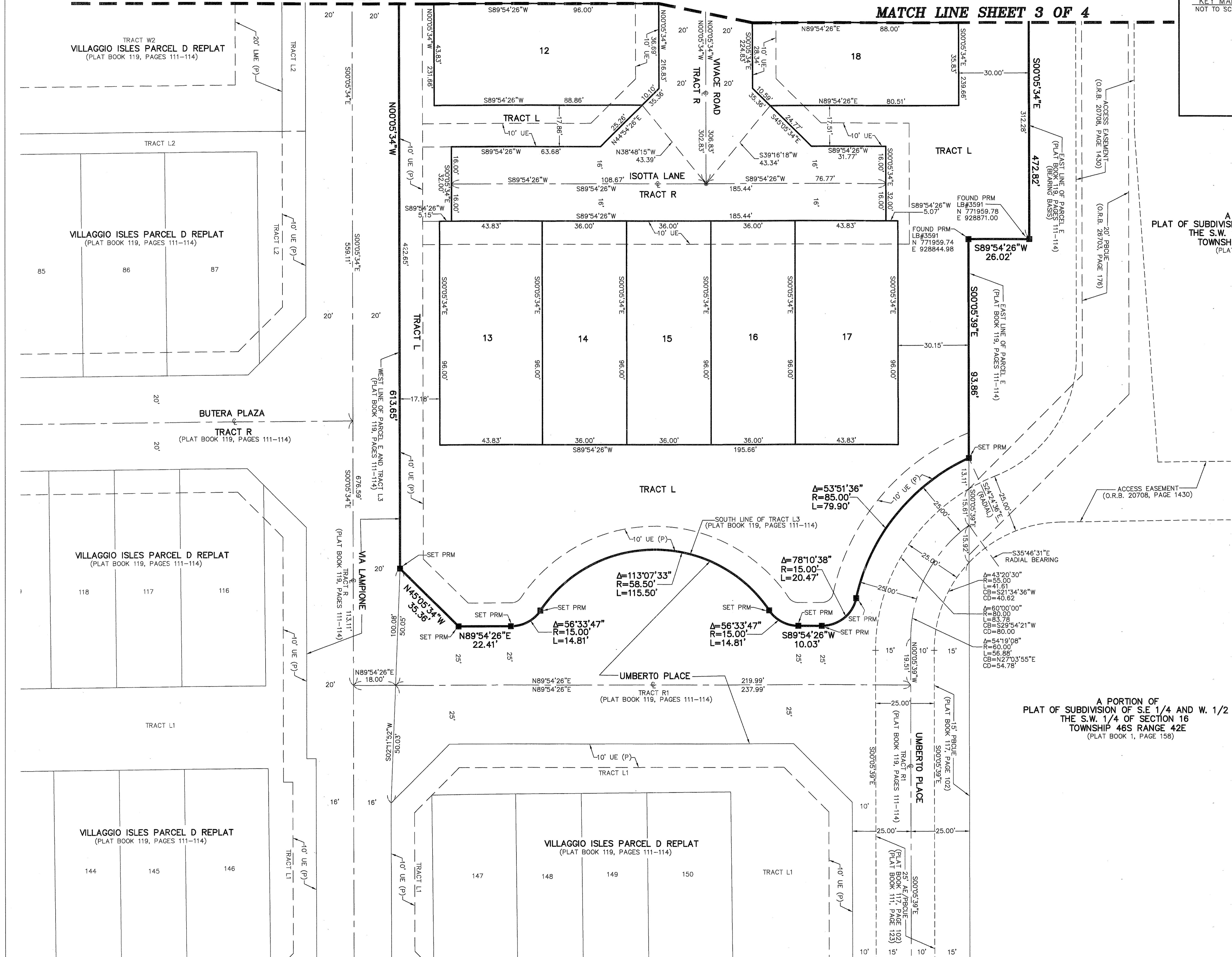
201

STATE OF FLORIDA  
COUNTY OF PALM BEACH  
RECORD AT \_\_\_\_\_ M.  
THIS \_\_\_\_\_ DAY OF \_\_\_\_\_  
A.D. 20\_\_\_\_ AND DULY RECORDED  
IN PLAT BOOK \_\_\_\_\_ ON  
PAGES \_\_\_\_\_ AND \_\_\_\_\_  
SHARON R. BOCK  
CLERK AND COMPTROLLER  
BY: \_\_\_\_\_  
DEPUTY CLERK

**SHEET 4 OF 4**

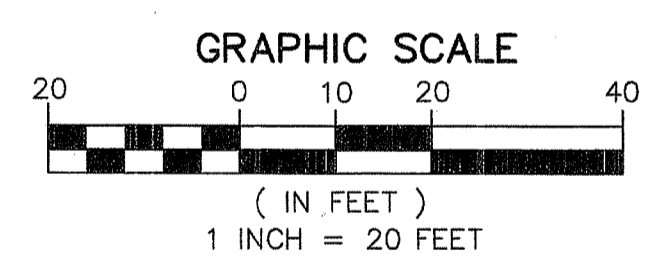
**MATCH LINE SHEET 3 OF 4**

**MATCH LINE SHEET 3 OF 4**



A PORTION OF  
PLAT OF SUBDIVISION OF S.E. 1/4 AND W. 1/2 OF  
THE S.W. 1/4 OF SECTION 16  
TOWNSHIP 46S RANGE 42E  
(PLAT BOOK 1, PAGE 158)

A PORTION OF  
PLAT OF SUBDIVISION OF S.E. 1/4 AND W. 1/2 OF  
THE S.W. 1/4 OF SECTION 16  
TOWNSHIP 46S RANGE 42E  
(PLAT BOOK 1, PAGE 158)



**NOTES**  
**COORDINATES, BEARINGS AND DISTANCES**  
COORDINATES SHOWN ARE GRID  
DATUM = NAD 83 1990 ADJUSTMENT  
ZONE = FLORIDA EAST  
LINEAR UNIT = US SURVEY FEET  
COORDINATE SYSTEM 1983 STATE PLANE  
TRANSVERSE MERCATOR PROJECTION  
ALL DISTANCES ARE GROUND  
SCALE FACTOR = 1.0000265  
GROUND DISTANCE X SCALE FACTOR = GRID DISTANCE  
BEARINGS AS SHOWN HEREON ARE GRID DATUM,  
NAD 83 1990 ADJUSTMENT, FLORIDA EAST ZONE.

**LEGEND/ABBREVIATIONS**  
C - CENTERLINE  
Δ - DELTA (CENTRAL ANGLE)  
AE - ACCESS EASEMENT  
CB - CHORD BEARING  
CD - CHORD DISTANCE  
DE - DRAINAGE EASEMENT  
L - ARC LENGTH  
LB - LICENSED BUSINESS  
LMAE - LAKE MAINTENANCE ACCESS EASEMENT  
LME - LAKE MAINTENANCE EASEMENT  
O.R.B. - OFFICIAL RECORD BOOK  
PBCUE - PALM BEACH COUNTY UTILITY EASEMENT  
R - RADIUS  
UE - UTILITY EASEMENT  
(P) - DENOTES VILLAGGIO ISLES PARCEL D REPLAT AS RECORDED IN PLAT BOOK 119, PAGES 111-114 PALM BEACH COUNTY RECORDS  
PRM - DENOTES PERMANENT REFERENCE MONUMENT 4" X 4" X 24" CONCRETE MONUMENT STAMPED LB3591 UNLESS OTHERWISE NOTED  
● - DENOTES PERMANENT CONTROL POINT NAIL AND METAL DISK STAMPED LB3591